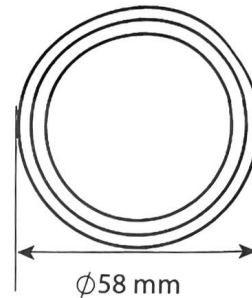


## Installation manual DLF-RND-3K/DLF-RND-4K Cabinet LED light kit

### Product data

| Light (1 pc.)                |              |
|------------------------------|--------------|
| Input voltage                | 12 V DC      |
| Input power                  | Max.1.6W     |
| Color rendering index        | CRI ≥80      |
| Color correlated temperature | 3000K/4000 K |
| Luminous flux                | 120 lm       |
| Dimensions                   | ∅58 x 8 mm   |

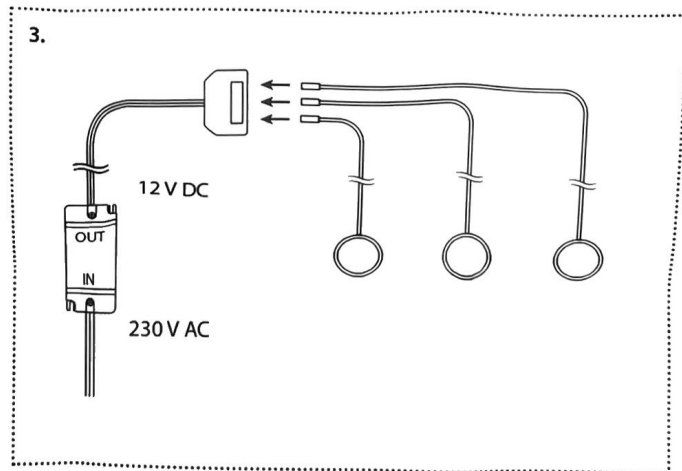
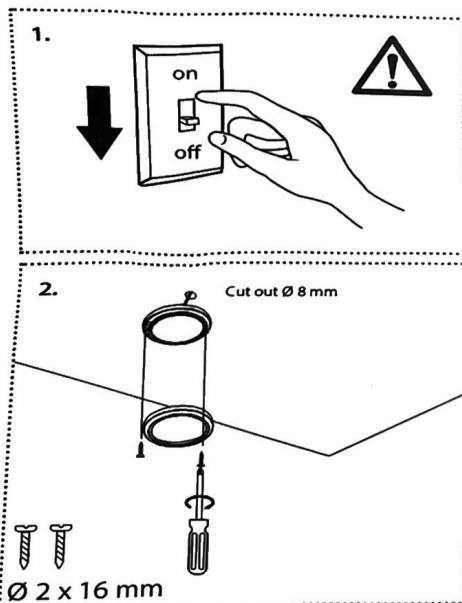
### Dimensions



1x

### Installation

1. Prior to installation, make sure that the luminaire is disconnected from the power supply and that the power supply is switched off!
2. Attach the luminaires to the required positions using the supplied screws.
3. Connect the luminaires to the distributor = push the cables with the connectors into the connector (see Fig. 3).
4. Connect the LED driver to your power supply.



- Use the LED Driver and the luminaire only indoors and do not expose them to high humidity